

# MLS Area 6

# Residential Statistics



# September 2021

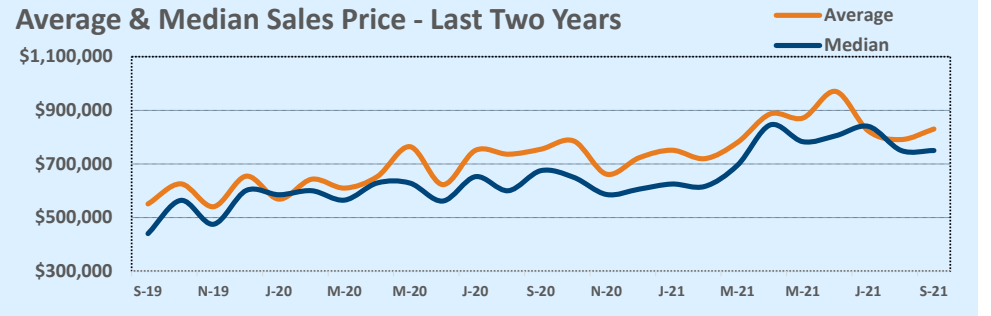
Listings	This Month			Year-to-Date		
	Sep 2021	Sep 2020	Change	2021	2020	Change
Single Family Sales	35	42	-16.7%	302	268	+12.7%
Condo/TH Sales	28	31	-9.7%	252	206	+22.3%
<b>Total Sales</b>	<b>63</b>	<b>73</b>	<b>-13.7%</b>	<b>554</b>	<b>474</b>	<b>+16.9%</b>
New Homes Only	3	13	-76.9%	62	72	-13.9%
Resale Only	60	60	--	492	402	+22.4%
Sales Volume	\$52,309,080	\$55,108,663	-5.1%	\$455,906,161	\$324,460,977	+40.5%
New Listings	65	85	-23.5%	597	700	-14.7%
Pending	27	52	-48.1%	55	488	-88.7%
Withdrawn	9	12	-25.0%	56	71	-21.1%
Expired	2	5	-60.0%	21	63	-66.7%
Months of Inventory	1.0	1.8	-46.8%	N/A	N/A	--

Price Range	This Month			Year-to-Date		
	New	Sales	DOM	New	Sales	DOM
\$149,999 or under	--	--	--	--	--	--
\$150,000- \$199,999	--	1	45	8	5	42
\$200,000- \$249,999	2	--	--	17	22	42
\$250,000- \$299,999	2	4	8	38	29	10
\$300,000- \$349,999	4	6	15	34	27	19
\$350,000- \$399,999	3	2	2	27	24	16
\$400,000- \$449,999	1	6	10	16	19	18
\$450,000- \$499,999	--	2	8	15	19	17
\$500,000- \$549,999	2	1	5	12	16	35
\$550,000- \$599,999	2	--	--	19	13	27
\$600,000- \$699,999	8	2	7	65	65	33
\$700,000- \$799,999	7	11	12	90	68	14
\$800,000- \$899,999	7	9	15	49	69	28
\$900,000- \$999,999	3	1	6	49	29	56
\$1M - \$1.99M	23	16	33	131	132	35
\$2M - \$2.99M	1	2	3	22	17	19
\$3M+	--	--	--	5	--	--
<b>Totals</b>	<b>65</b>	<b>63</b>	<b>17</b>	<b>597</b>	<b>554</b>	<b>28</b>

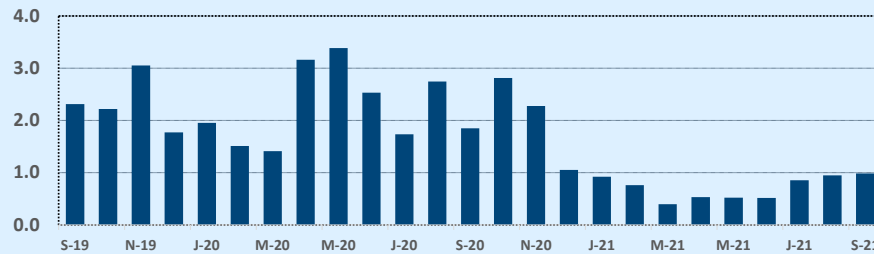
Average	This Month			Year-to-Date		
	Sep 2021	Sep 2020	Change	2021	2020	Change
List Price	\$822,517	\$763,285	+7.8%	\$790,829	\$697,276	+13.4%
List Price/SqFt	\$567	\$438	+29.6%	\$513	\$428	+19.8%
Sold Price	\$830,303	\$754,913	+10.0%	\$822,935	\$684,517	+20.2%
Sold Price/SqFt	\$577	\$432	+33.5%	\$536	\$422	+27.2%
Sold Price / Orig LP	102.1%	97.5%	+4.8%	104.4%	97.1%	+7.5%
Days on Market	17	43	-60.9%	28	39	-27.4%

Median	This Month			Year-to-Date		
	Sep 2021	Sep 2020	Change	2021	2020	Change
List Price	\$725,000	\$675,000	+7.4%	\$715,000	\$625,000	+14.4%
List Price/SqFt	\$562	\$419	+34.3%	\$482	\$406	+18.6%
Sold Price	\$750,000	\$675,000	+11.1%	\$751,250	\$615,000	+22.2%
Sold Price/SqFt	\$544	\$417	+30.4%	\$504	\$400	+26.0%
Sold Price / Orig LP	100.0%	98.0%	+2.0%	102.0%	98.0%	+4.1%
Days on Market	6	18	-66.7%	6	17	-63.6%

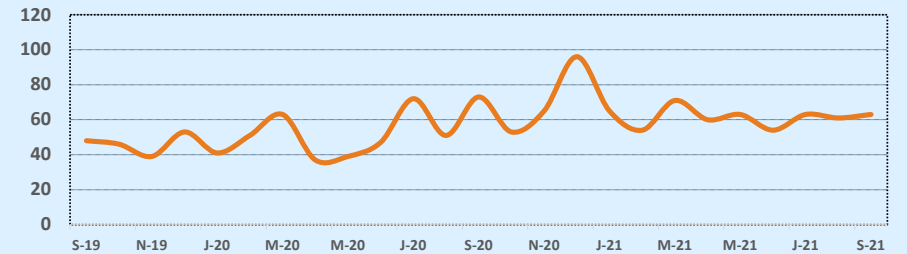
Average & Median Sales Price - Last Two Years



Months of Inventory - Last Two Years



Number of Sales - Last Two Years



Based on information from the Austin Board of REALTORS® (alternatively, from ACTRIS). Neither the Board nor ACTRIS guarantees or is in any way responsible for its accuracy. The Austin Board of REALTORS®, ACTRIS and their affiliates provide the MLS and all content therein "AS IS" and without any warranty, express or implied. Data maintained by the Board or ACTRIS may not reflect all real estate activity in the market.